



# LOGIC Enterprise CORE



# Table Of Contents

LOGIC Enterprise	03
Verticals We Serve	04
Modules Covered	05
Why Choose us?	20





# LOGIC Enterprise

---

*LOGIC Enterprise Software provides an Integrated ERP Solution for Retail, Distribution and Manufacturing. It is an End-to-End fully customizable and scalable solution for all your business needs. It is available both in on-line and off-line mode.*

## Key Features

- *Robust, Scalable and Flexible ERP Software Solution*
- *MRP and Production Planning with LOGIC ERP Manufacturing Software*
- *Manage Multiple Stores, Warehouses, Point of Sales with LOGIC ERP*
- *Streamline all your business operations*
- *Optimum Inventory Management using LOGIC ERP Auto-Replenishment Module*
- *Automate your Supply Chain with LOGIC ERP SCM*
- *Cost Management of Raw/Semi-Finished and Finished Goods*
- *Online Cloud Based ERP Software for Realtime Information Access*
- *Available both in Browser and Desktop*



# Verticals We Serve

---

Vertical Specific and GST Ready Business Application managing

**Multi-Location, Multi-Company, and Multi-Vertical**



## Apparel

Apparel | Footwear | Fashion



## FMCG

FMCG | Supermarkets |  
Hypermarkets



## Pharma

Pharmaceuticals | Medicine



## Lifestyle & Fashion

Cosmetics | Jewellery |  
Home Decor



## Electronics

Electronics | Electricals |  
White Goods



## F&B

Food | Beverages



## Wellness

Wellness | Spa | Salon



## Hardware

Hardware | Paints |  
Building Materials



# Modules Covered

---



Procurement



Order Processing



Warehouse Management



Production



Supply Chain Management



Payroll



Accounts & Finance



MIS Reporting



Point of Sale



CRM  
Loyalty Management



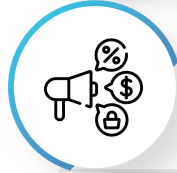
B2B



Inventory Management



e-Commerce

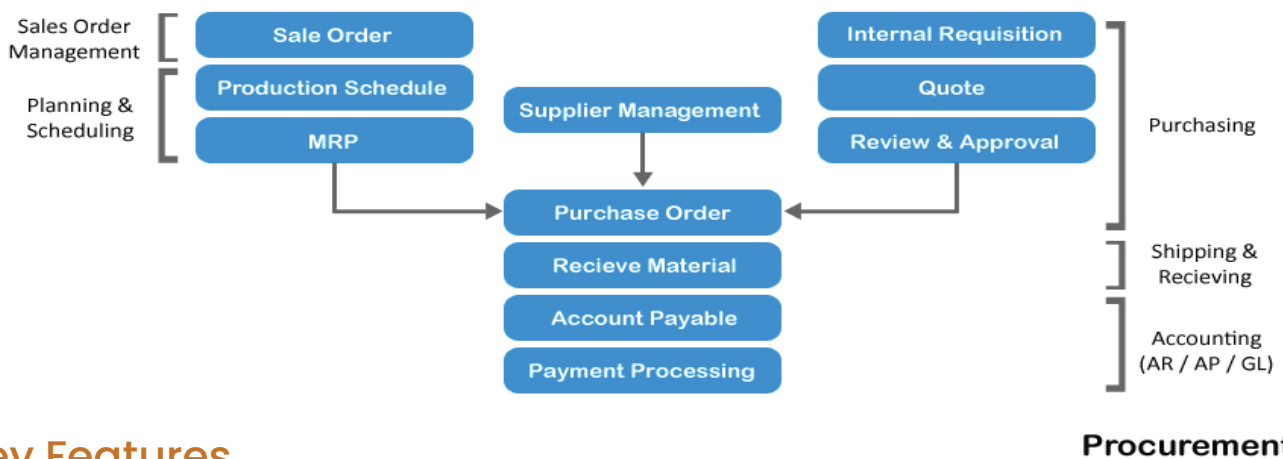


Promotion &  
Campaign Management



# Procurement

LOGIC ERP simplifies the procurement process by providing smart integration of business applications down the entire business channel.



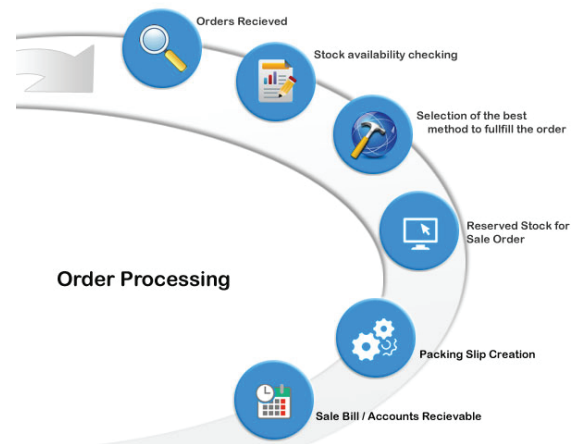
## Key Features

- Timely planning of raw material purchase Orders from finished goods sale orders through MRP planning
- Keep track of purchase orders with vendors through Vendor Portal
- Automatic and timely generation purchase orders for stock re-filling at branches/ stores using Advanced Auto-Replenishment
- Quality Control module with multiple customizable parameters for goods received
- Physical verification process of goods received.
- Automatic generation of rejection and replacement debit notes for rejected goods
- Gate pass entry module for better goods/inventory receipt management
- Multi-level Approval System for Vendor Payments
- Internal Requisitions by various departments before Purchase Order generation
- Quotation Management and price comparison between vendors/suppliers
- Purchase order amendment history for better control
- Payment Management of vendors through Payment Requisition Approval System
- Additional expenses entry module in purchase for calculating landing cost goods. e.g. Freight, Loading/Unloading etc. expenses received after goods receipt.



# Order Processing

LOGIC ERP offers dynamic functionalities to generate and process business orders on the fly. LOGIC ERP Order Processing Software provides different types of sale order processing like sale orders from Point-Of-Sale, distributors, retailers or as Purchase Orders for stock refilling or as Job Orders for production planning and manufacturing



## Key Features

- Bulk sale order creation through Excel
- B2C sale order creation through API
- Sale Order creation through purchase orders from retail stores/POS/branches
- Purchase order creation through sale orders for stock refilling
- Job order creation through sale orders for production planning
- Sale order creation using advanced filters like recently ordered items, new introduced items, items ordered by other customers in the same area etc.
- Sale order amendment history
- Multi-level approval system for sale order validation
- Reserve stock against sale orders
- Delivery Orders against stock reserved
- Pick list creation for stock retrieval
- Stock scanning for packing against delivery orders / pick lists
- Mobile app for stock retrieval against pick list
- Direct packing slip creation against sale order without stock reservation



# Warehouse Management

LOGIC ERP Warehouse Management Software helps automate your warehouse management by offering solutions for space management, rack, and bin wise inventory management. LOGIC ERP can also integrate to various third-party WMS software through API.



## Key Features

- Hierarchical warehouse definition i.e., Warehouse (Branch) + Godowns + Racks + Bins
- Define product/item dimensions for capacity calculation
- Define bin dimensions for capacity calculation
- Capacity management available both units and volume
- Specify product category wise bins. Items belonging to the specified product category will be allocated to those bins.
- Automatic bin wise stock allocation based on capacity calculation
- Bin to Bin stock transfer to manage physical stock
- Physical stock verification of stock through RFID, Mobile app, PDA etc.
- Pick list creation rack/bin wise for stock retrieval
- Mobile app for stock retrieval against pick list
- API integration available to integrate with various third part WMS solutions like Shafer, Increff, Infor etc.





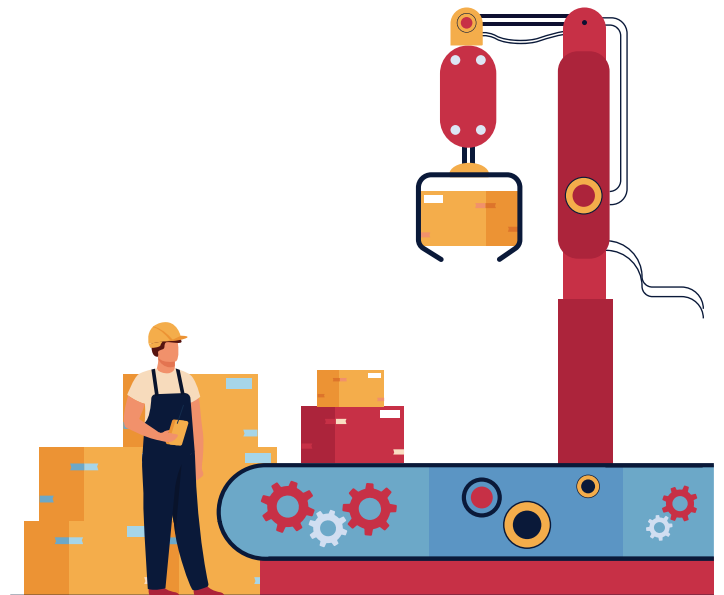
# Production

---

LOGIC ERP Production Management Software is a tailor-made solution, designed to enhance innovation and automation of manufacturing processes for increased operational performance. Offering intelligent linking between different modules, it integrates business information on a unified platform, automating back-office functions for effective business process management.

## Key Features

- Discrete manufacturing
- Process manufacturing
- Make to order
- Make to stock
- Assemble to order
- Make to assemble
- Batch manufacturing handling
- Progressive bundle system
- Techpack and measurement features
- Material Requirement planning (MRP)
- Production Units, floor and line load and scheduling.
- Range plan and sampling
- Multi-level Bill-of-Material
- Bales, Rolls and it's Barcoding.
- Recipe definition for F&B Industry
- Quality Control/Testing of Raw Material/Sem-Finished Goods/Finished Goods
- Wastage handling
- Finished goods costing from raw material costs and various overheads
- Work-In-Progress Analysis





# Supply Chain Management

---

LOGIC ERP Supply Chain Management Software provides rich feature pack to help your business optimize physical flow of goods, track inventory, schedule purchase cycles. Modules like Advance auto-replenishment help your business maintain optimum stock/inventory at stores and point of sales.

## Key Features

- Multi-Branch, Multi-Warehouse, Multi-Retail/POS
- Automatically transfer stock from one warehouse to stores in real time
- Goods in transit module helps to keep real-time track of goods/inventory
- Advanced auto-replenishment
  - Set priority of retail store/POS for refilling of stock/inventory
  - Inventory re-filling-based product category wise sell-thru, base inventory, existing inventory, pending orders and much more.
  - Substitution/alternate item/product suggestion based on MRP or Shade or Style
  - New items/products introduced are automatically re-filled
  - Multi-product category wise hierarchal definition of base stock/inventory for refilling at retail store/POS level
  - Multi-product category wise definition of re-order at retail store/POS level
  - Advance feature of planning for upcoming season/period.
- Vendor management through vendor portal to keep track of purchase orders and their dispatches
- Invoice generation from various sources like Delivery Orders, Sale Challans, Sale Orders etc.
- Easy and fast revision selling rates or MRP at branches or retail stores or POS
- Sales/Goods return management with validating returns against invoices, physical verification of returns, damaged goods return, expired goods return etc.
- Raw Material requirement generation from sale orders received using material requisition planning
- Sales price control through detailed price list management with location, party/customer, party/customer group, item/product category, item/product wise multiple markdowns etc.
- Purchase price control through price comparison through quotation management etc.



# Payroll

---

LOGIC ERP Payroll Management Software provides an advanced solution for various payroll processes like maintaining detailed employee record, various modes of salary calculation like hourly, piece wise wages etc., overtime/undertime management, maintaining statutory records and much more.

## Key Features

- Maintain detailed employee records with option to attach various documents digitally
- Define flexible payroll calculation period. Payroll can be calculated monthly or as per user defined period.
- Multi-Branch employee management.
- Employee payroll calculation mode can be periodic fixed salary, hourly or piece rate based
- Customizable addition/deductions can be defined for each employee
- Configurable payroll calculation modes for each employee or a group of employees
- Comprehensive overtime and under time management
- Shift wise payroll management.
- Import daily attendance from external source like excel or biometric device
- Flexible modes of entry of attendance available like detailed log of time in/time out or just marking present or absent.
- Leave management with option of Casual Leaves/Sick Leaves/Optional Leaves etc.
- Holiday management with Sundays/Week Offs or holidays automatically marked as Paid Leave or option to provide overtime on Sundays/Week Offs or holidays
- Tracking of loans/advances given to employees and automatic monthly deduction from salary.
- Linking of production/manufacturing directly with payroll in case of piece wise work like job work etc.
- Various statutory reports for ESI, Provident fund included
- Tax calculation and TDS deduction from salary.
- Arrears calculation and disbursement with salary.
- Posting of calculated salary in accounts in summarized form.



# Accounts & Finance

---

LOGIC ERP Accounts and Finance Software provides a robust accounting module with standard features like general ledger, accounting vouchers and advanced features like cost centers, budgeting, multi-branch, and multi-currency accounting.

## Key Features

- Standard features like general ledger, accounts receivable/payable, profit and loss a/c and balance sheet
- Multi-Branch and Multi-Currency accounting
- Multiple levels of balance sheet grouping of accounts
- 10X5 levels of general grouping
- Separate data entry vouchers for Bank Receipts/Payments and Cash Receipt /Payments
- Cost Centers, Cost Elements and Profit Center tagging with each entry
- Cost Element wise budgeting
- Cost Center + Profit Center + Account wise budgets
- TDS/TCS module
- Journal Sale/Sale Return with HSN and automatic GST liability posting
- Journal Purchase/Purchase Return with HSN and automatic GST liability posting
- Postdated cheque management
- Petty Cash management
- Multi-level approval and audit option for all accounting vouchers.
- Bank Reconciliation through excel
- Automatic posting of year end closing entries
- Accounts posting available in all inventory documents like sale invoices, purchase, purchase returns etc.
- Configurable reporting and dashboards.
- Complete audit trail of all documents



# MIS Reporting

LOGIC ERP MIS Reporting Software provides configurable reports and dashboards in both summarized and detailed form for analysis.

## Key Features

- More than 400+ base reports available
- Each report can have unlimited number of report configurations with unique views and data filters
- Export large reports to excel in seconds
- Multiple analysis reports available across multiple financial years
- Power reports feature analyzes large amount of data in seconds
- Various inbuilt dashboards for analyzing data across multiple financial years
- User based data access roles to limit access to data as per user role
- Auto-Report mailer generates reports at scheduled times for e-mailing
- Mobile app for offline reporting
- Reporting categories
  - Financial Reports
  - Balance Sheets
  - Financial Analysis
  - Sale Registers
  - Sale Analysis Reports
  - Order Reports
  - Scheme Reports
  - Purchase Reports
  - Stock Reports
  - Production Reports
  - Payroll Reports
  - CRM Reports
  - User Access Reports
- Business Insights module for dashboards





# Point of Sale

---

## Key Features

- Advanced and fully configurable POS system
- Multiple Views
- Touch/Mobile POS
- Flexible Schemes and promotions
- Weighing Scale Integration
- Conversion factors (Buy in cases/Dozens etc. and sell in pcs)
- Integrated with PayTM, PayU, Mobikwik, Pine Lab, Jio Money
- Aaptak app for online ordering
- Home Delivery app
- Cashier/Shift System
- Multiple Payment Modes
- Expiry Prompt





# CRM – Loyalty Management

LOGIC ERP CRM-Loyalty Management Software provides a comprehensive tool to manage your POS level customer loyalty through points, discount coupons, gift vouchers etc.



*Customer Relationship Management*

## Key Features

- Inbuilt Loyalty System for Points Accrual and Redemption with customizable configuration
- Multi-Branch/Retail store wise customer management.
- Customer visibility across all channels like physical store, online website facilitating omni-channel sales
- Brand/Category wise membership packages
- Birthday and anniversary discount and offers
- Discount Coupons and Gift Vouchers
- OTP based Points and Coupon Redemption
- Manual Discount Entry approval through Mobile App or OTP
- Customized Feedback and Surveys
- Instant Feedback at POS
- Send digital bills through SMS/WhatsApp
- Integrated with third party Loyalty Programs



11

## B2B

LOGIC ERP B2B/Online Order Management Software is complete solution for order booking and management through self-serviced/easy to configure cloud based B2B ordering portal/App.



### Key Features

- B2B Platforms - Integrated, Cloud and Offline
- Product catalogue with multiple images
- Multiple views for item/product listing
- The portal or app can be used both by the field salesmen/agents or customer directly
- Field Sales Agents/Salesmen can book orders from customers
- Customers can place orders directly by using Portal or App
- Stock-in-hand can be checked while placing orders
- Customer outstanding and ledger can be viewed both by agents and customers
- Field agents can enter cash or cheques received through the portal/app
- Facility to track agents in the field on Google Maps using Geo-Location API
- Shade and Size wise entry for apparel/fashion industry
- Item Sets wise entry. Multiple items with quantity can grouped as one SET to facilitate order booking of a SET of Items with just one click.
- Automatic generation of multiple orders from Items selected in the Cart based on Brand/Item Category etc. for better order management
- Stock Validation can be placed while booking orders. Orders beyond available stock can be blocked.
- Customer wise Price List while booking orders. Individual customer can view prices according to margins / discounts offered.





12

# Inventory Management

LOGIC ERP Inventory Management Software provides a comprehensive solution to manage and track your inventory. Inventory can be tracked Item Wise/Batch or Lot Wise/Serial Number wise through multiple godowns and branches. LOGIC ERP Inventory software also helps you keep track of dead and slow-moving stock so that you can move your inventory accordingly.



## Key Features

- Multiple units of measure (Dozens, Cases, Pcs etc.) for each item
- Inventory Capture - Barcoding SKU/EAN/Batch No/MRP/Pcs wise unique
- Fully Customized Barcode Generation
- Expired/Damaged Stock/Inventory Management
- Bin/Rack wise Items/Stock Inventory Management
- Dead/Slow Moving Stock Reporting and Management
- Maintain Carton/Set Wise Inventory
- Define product/item dimensions for capacity calculation
- Define bin dimensions for capacity calculation
- Capacity management available both units and volume
- Inventory Movement (FIFO, LIFO and Actual)
- Inventory valuation like FIFO, LIFO, Weighted Average, Moving Weightage Average, Standard.
- Goods In Transit and well as reconciliation of stock across locations
- Auditing and Physical Verification of Inventory
- Assembling/De-Assembling/Bundling of inventory
- Bill-Of-Material (BOM) provide deep insights to raw material mix, cost of ingredients, cost of final products and much more



# E-Commerce

LOGIC ERP E-Commerce Management Platform provides integration to various third-party platforms like Unicommerce, Vinculum, eShipz, Truevalue etc. for B2C order and dispatch management. Custom E-Commerce websites can also take advantage of LOGIC ERP API to integrate the B2C processes with LOGIC ERP.

## Key Features

- Share Item masters with various B2C platforms
- Share real time stock with various B2C platforms
- Auto-receive orders into LOGIC ERP from multiple B2C platforms like Amazon, Flipkart etc.
- Stock scanning for packing against delivery orders / pick lists
- Mobile app for stock retrieval against pick list
- Share order status/stage information with various B2C platforms
- Automatic schemes/discounts management for B2C orders
- Share invoice creation and order shipping information with B2C platforms
- Manage accounts receivables/commission of various B2C platforms
- Auto-Reserve stock against orders received
- Multi-level approval system for sale order validation
- Delivery Orders against stock reserved
- Pick list creation for stock retrieval
- Integration Partners
  - Unicommerce
  - Vinculum
  - eShipz
  - Fynd Platform
  - Rubicon





# Promotion & Campaign Management

LOGIC ERP Promotion/Scheme Campaign Management module provides a comprehensive tool to manage various schemes, discounts, discount coupons, gift vouchers, birthday discounts, loyalty card discounts, point based discounts etc. across multiple retail stores/branches.



## Key Features

- Create multiple custom scheme campaigns filtered on basis of Brands, Item categories, Items, SKUs, periods etc.
- Multiple discount fields available both in percentage and value
- Retail Store/Branch/Branch Group wise scheme campaign applicability
- Discount Coupons and Gift Vouchers
- Pre-Paid Discount Cards
- Loyalty Discount Cards
- Points based accrual, redemption, and discount management
- Retail Customer wise Birthday/Anniversary Discounts
- Skip/disallow discounts on fresh stock/inventory
- Schemes/Discounts based slow moving/dead stock/inventory
- Manual Discount Entry approval through Mobile App or OTP
- Performance analysis of various schemes and promotions through comprehensive reports



# Why Choose Us?

*Because we believe in providing quality, Not just the first time, But EVERY TIME.*



**High Customer Satisfaction**



**Quality Project Delivery**



**Transparent Development Process**



**Daily status Update**

